



Highland Road, SE19 | Guide Price £550,000

02087029333

crystalpalace@pedderproperty.com

pedder
We live local



In General

- A share of the freehold
- Direct access to private decked area
- 848 sq ft / 78.8 sq m
- Private entrance
- No onward chain
- Sought after location
- Nearby Gipsy Hill station

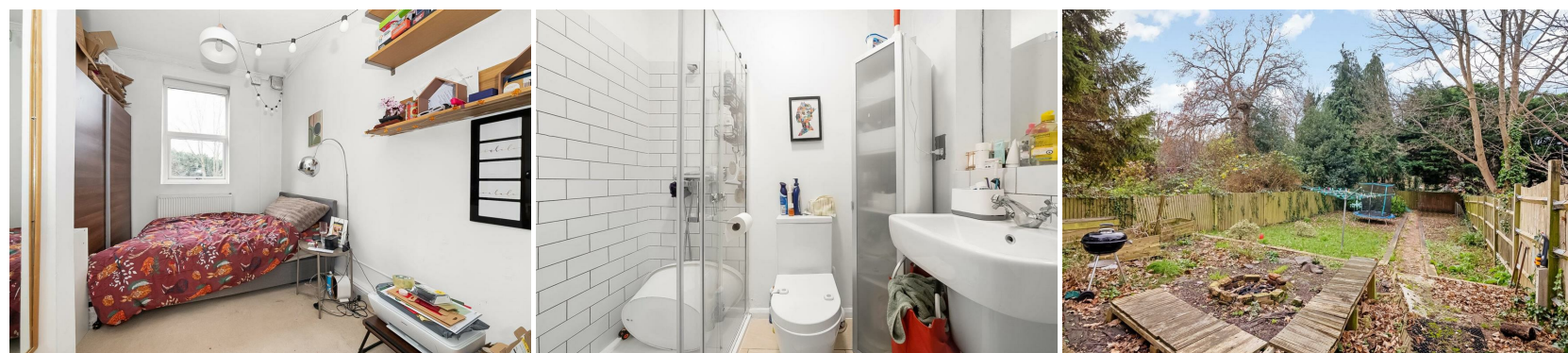
In Detail

* GUIDE PRICE £550,000 - £575,000 * A spacious two bedroom, three bathroom ground floor period conversion conveniently located on a quiet residential road nearby central Crystal Palace.

The property is accessed via a private side entrance which leads into a kitchen with lots of storage and solid wood countertops, and a breakfast bar. This is socially open-plan to reception room which has a bright sash bay window and high ceilings. There are two en suite bedrooms, the larger featuring double doors to a 25ft private decked area with a sunny south-easterly aspect leading onto a substantially sized communal garden. Also, a further separate shower room for guests. The original layout has been modified to create a third room which could be an ideal space for a home office. Additional benefits include a share of the freehold and no onward chain.

Highland Road is just off of Gipsy Hill and is within close proximity to Gipsy Hill station and the bustling Crystal Palace Triangle.

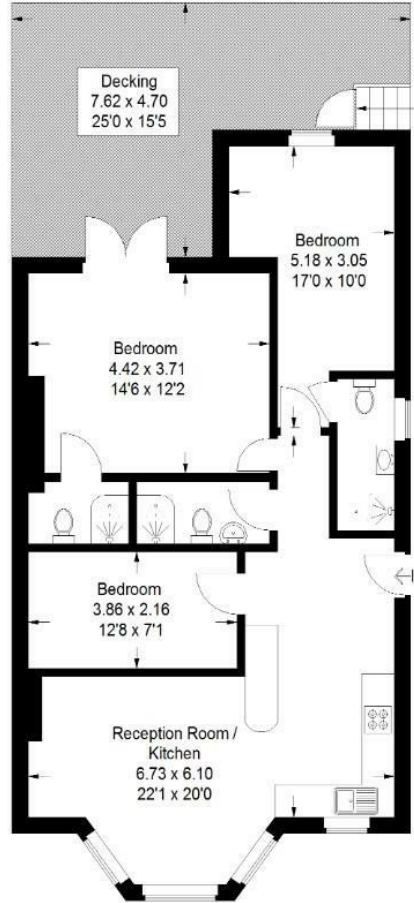
EPC: E | Council Tax Band: C | Lease: 997 years remaining | SC: £100pm | GR: N/A | BI: Incl in Sc



Floorplan

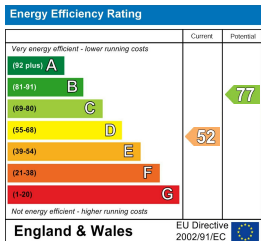
Highland Road, SE19

Approximate Gross Internal Area
78.8 sq m / 848 sq ft



Basement

Copyright www.pedderproperty.com © 2024
These plans are for representation purposes only as defined by RICS - Code of Measuring Practice. Not drawn to Scale. Windows and door openings are approximate. Please check all dimensions, shapes and compass bearings before making any decisions reliant upon them.



Pedder Property Ltd trading as Pedder for themselves and for the vendor/landlord of this property whose agents they are, give notice that (1) these particulars do not constitute any part of an offer or contract, (2) all statements contained within these particulars are made without responsibility on the part of Pedder or the vendor/landlord, (3) whilst made in good faith, none of the statements contained within these particulars are to be relied upon as a statement of representation or fact, (4) any intending purchaser/tenant must satisfy him/herself by inspection or otherwise as to the correctness of each of the statements contained within these particulars, (5) the vendor/landlord does not make or give either Pedder or any person in their employment any authority to make or give representation or warranty whatsoever in relation to this property.